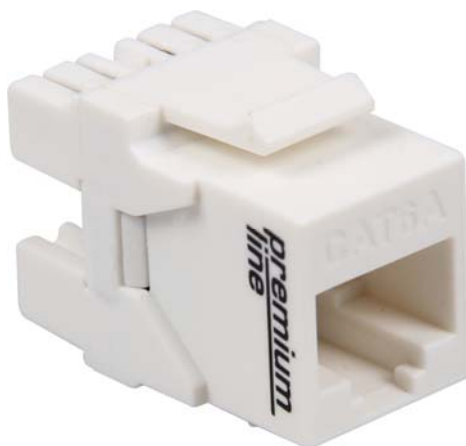


FEATURES:

- Performance conforms to ANSI/TIA 568.2-D, ISO/IEC 11801-1, EN 50173-1 Class Ea specification
- Enhanced circuit board design and improved RJ45 contacts provide superior performance
- Compact design ideal for high density applications: up to 24 keystone jacks can fit into 1U 24 port unloaded patch panel
- Dual IDC connector can accept 22-26 AWG solid cables
- Terminate with 110 or krone tools
- ETL Verified
- RoHS compliant



APPLICATION:

- 10GBASE-T Ethernet
- 1000BASE-TX Gigabit Ethernet
- 1000BASE-T Gigabit Ethernet
- 100BASE-TX Fast Ethernet.
- 10BASE-T Ethernet.
- Voice, Video and other applications.

Premium Line Systems GmbH reserves the right to change specifications without prior notice.

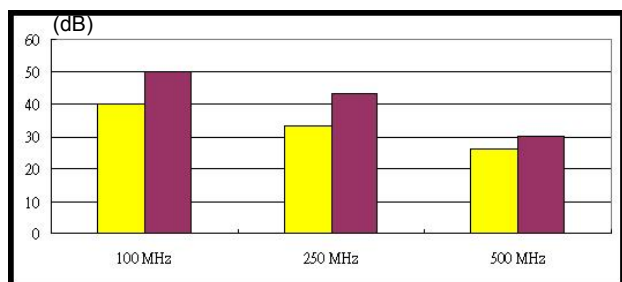
CHARACTERISTICS:

Dielectric Strength	1000V RMS for 1min
Current Rating	1.5Amp Max.
Insulation Resistance	10MΩ Min.
Contact Resistance	2mΩ per contact
Temperature Range	-10° to 60°
Humidity	10%~90%; non condensing
Material Flame Rating	PC, UL94 V-0
Admissible Conductor	22AWG ~ 26AWG insulation wire
8pin contact in PCB Jack	Phosphor bronze, 50μ inch gold plated over nickel plated in contact area
Operating life: Minimum 750 insertions	
IDC Contacts	100μ inch nickel plated over phosphor bronze
Operating life: Minimum 250 Re-terminations	

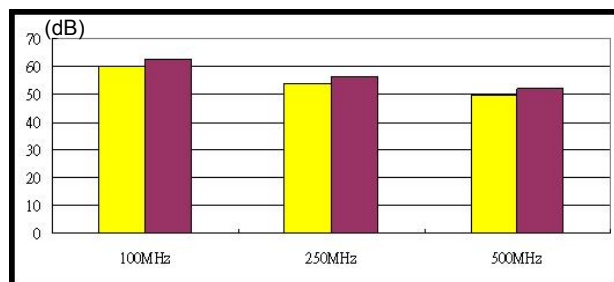
TYPICAL PERFORMANCE:

Channel Performance Data for 10G 6A Unshielded Solution

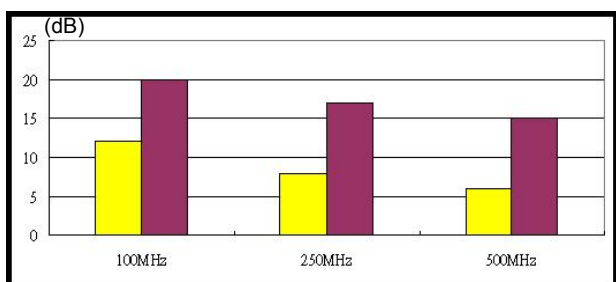
PSNEXT



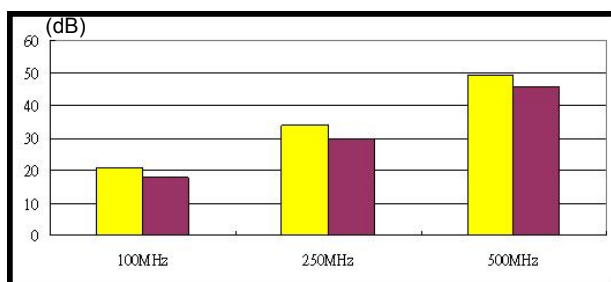
PSANEXT



Return Loss



Insertion Loss



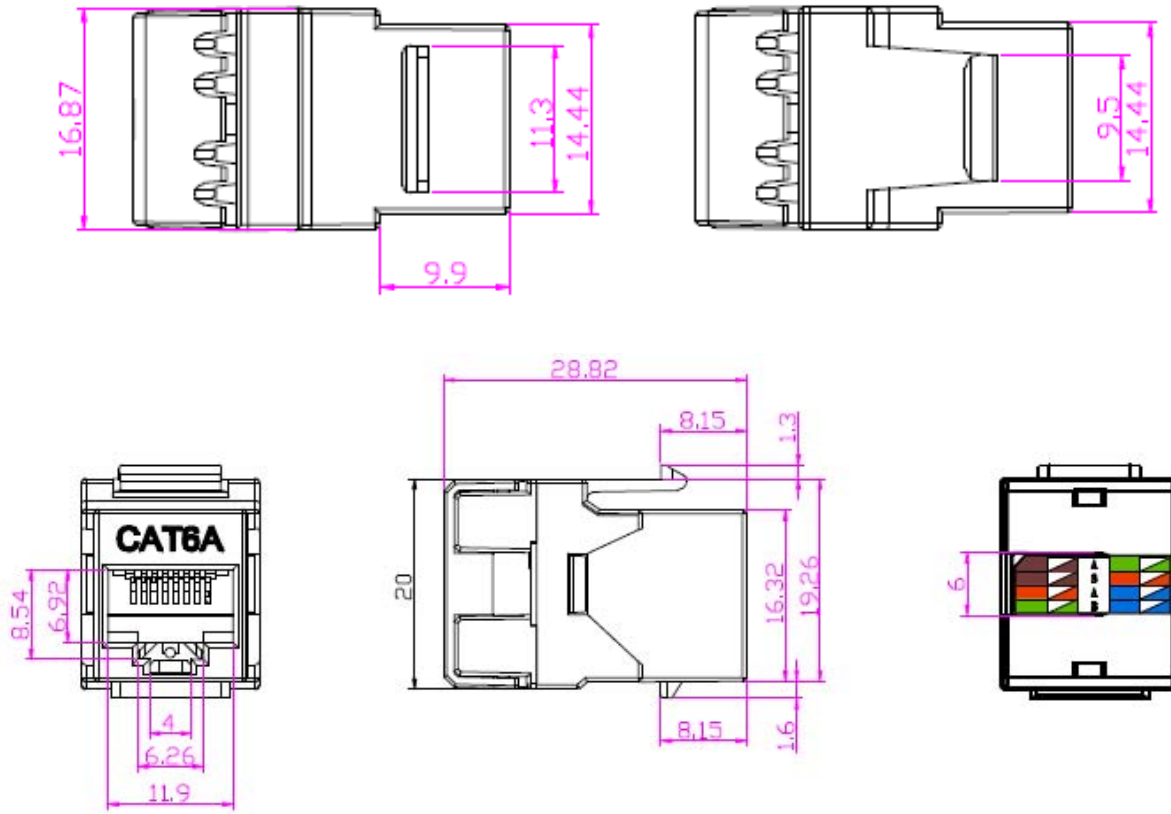
Cat.6A Limit Typical

Part No. 109121010

Ver.1901

Product Specification

DRAWING:



ORDERING INFORMATION:

Part NO.	109121010
Description	Cat.6A 180° unshielded keystone jack, dual type IDC, white
Packing	1pc/PE bag, 50pcs/ box, 500 pcs/carton
carton size	53.8*35.2*27 cm
weight	N.W. 5.0KG G.W. 9.1KG

Premium-Line Systems GmbH, Rosenheimer Str.89, D-83064 Raubling, Germany

► TEL: + 49(0)8035 9836 0 ► Fax: + 49(0)8035 9836 22

Premium Line Systems GmbH reserves the right to change specifications without prior notice.